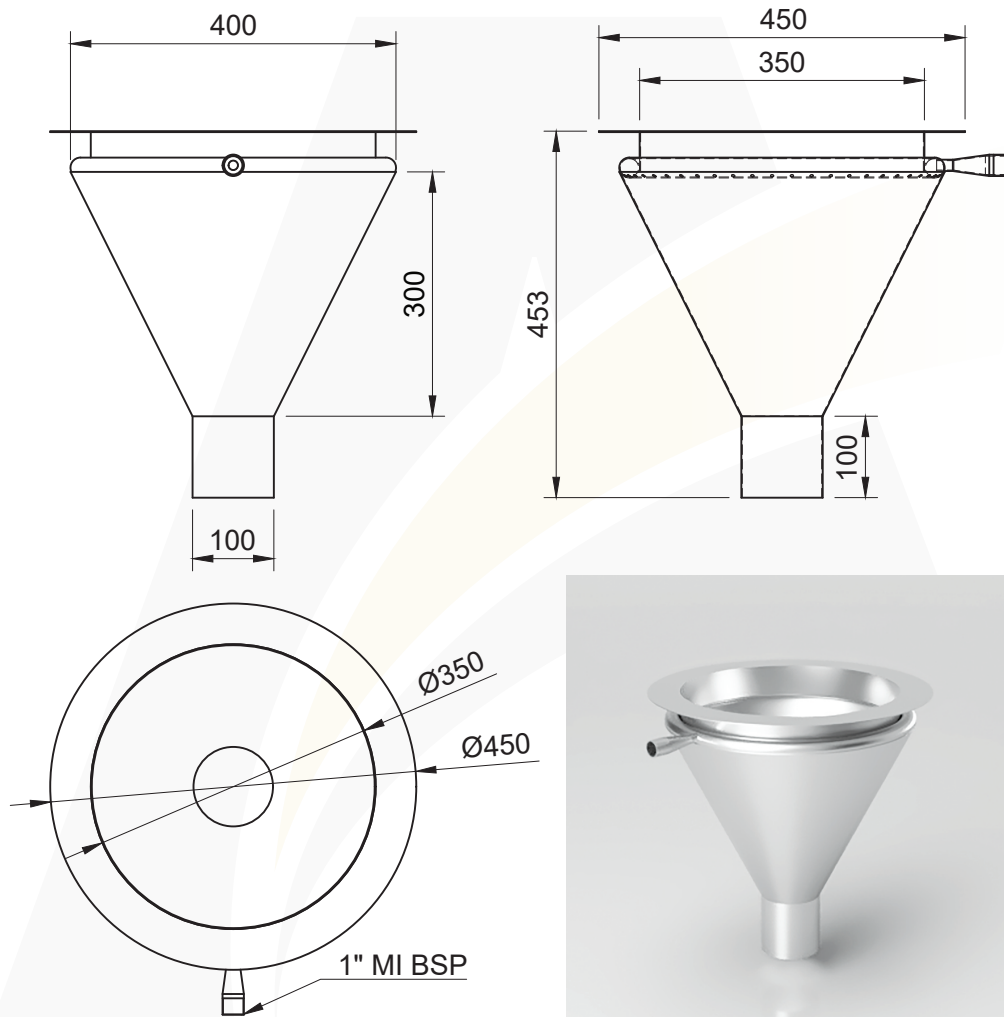




CONICAL INSET FLUSHING SINK

5



5.1

SKU CODE: ASS-CIFS

This quality custom made conical inset flushing rim sink is manufactured from 1.2mm thickness and in 304 grade stainless steel. It can be inset into a wide range of benchtops. The conical flushing sink has a perforated concealed tube around the top of the bowl for clean flushing liquid waste from the internal surface.

SPECIFICATIONS:

- WaterMark approved
- Made in 1.2mm, 304 grade stainless steel
- Available in 300 or 350mm internal diameter
- 25mm BSP inlet
- Compatible with self flushing systems

USES:

- Aged / Health care
- Hospitals
- Wineries



Lic. WMK26722
WMTS 526





SIGN-OFF FORM

Company:

Name:

Phone:

Email:

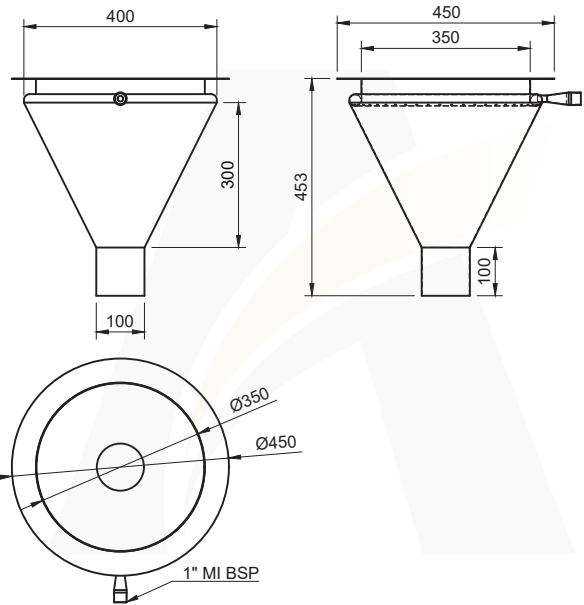
Purchase Order #:

Date:/...../.....

Signature*:

Quantity:

Stainless steel grade: 304 316 (extra charges)



ASS-CIFS (Conical Inset Flushing Sink)

Internal diameter: 300mm 350mm

Inlet BSP size: 25mm MI BSP 25mm FI BSP

Flange size: 50mm Custom:

**By submitting this form you declare that the details provided in this Sign-Off Form are accurate and will be used to manufacture your product. In the event that incorrect details have been provided, Advance Stainless Steel will not be held liable for these errors. All custom made orders cannot be returned and are non-refundable. The lead time is between 10-15 working days plus delivery.*